



Clark&Co Winter Series 2018 powered by Seaview Sails & Rigging & Burnsco

NOTICE OF RACE AND SAILING INSTRUCTIONS

THE ORGANISING AUTHORITY IS THE TITAHI BAY BOATING CLUB Inc

1. General and Safety Rules

1.1 Racing will be governed by the 'rules' as defined in The Racing Rules of Sailing.

1.2 YNZ Safety Regulations Part V Category C shall apply to Trailer Yachts and Sports Trailer Yachts, upgraded to include a VHF transceiver. For Sports Boats, this changes the Safety Regulation Part V, clauses 11.1, 13.1, 13.2 and 13.3.

1.3 Trailer Yacht's and Sports Trailer Yacht's centreboards shall be locked fully down at all times while racing. This changes YNZ Safety Regulation Part V Clause 7.6.

1.4 Keelers with lifting keels shall have keels locked in the down position and not moved during racing.

1.5 All Keelers shall comply with YNZ Safety Regulations Part II Category 5 upgraded to include a VHF transceiver.

1.6 A boat that retires from a race shall notify the race committee as soon as possible [DP].

1.7 A boat may be checked for compliance with the Notice of Race and Sailing Instructions at any time.

1.8 Each race day prior to racing all boats intending to race shall complete a sign-on sheet. This will be available at the briefing held at the Mana Cruising Club. A boat failing to comply will be scored Did Not Start. This changes rule A4.1.

1.9 Boats entering in the Two Handed Division may have no more than two persons on board while racing; and shall not use spinnakers and or/multi-purpose sails while racing. The only sails permitted are normal upwind sails that shall be attached in the same manner as if the yacht were sailing to windward i.e. hanked to the forestay or fitted with a forestay foil. Headsails may be poled out.

1.10 For Trailer Yachts and Sports Boats, personal flotation devices shall be worn at all times while afloat.

1.11 Keeler crew shall wear lifejackets at all times, unless the person-in-charge of the boat considers that conditions are such that there is no significant increase in the risk to safety to any persons through not wearing a lifejacket, and expressly gives permission for lifejackets not to be worn.

1.12 The notation '[DP]' in a rule in the SI means that the penalty for a breach of that rule may, at the discretion of the protest committee, be less than disqualification

2. Notices to Competitors

2.1 Notices to competitors will be posted on the Official Notice Board located at the downstairs lounge of the Mana Cruising Club.

3. Changes to Sailing Instructions

3.1 Any changes to the Sailing Instructions will be advised at the briefing and posted at least 90 minutes before the first scheduled warning signal of the day, except that any change to the schedule of races will be posted by 1200 hours on the day before it will take effect.

4. Signals Made Ashore

4.1 Signals made ashore will be displayed at the Plimmerton Boating Club Start Tower.

4.2 When flag "Y" is displayed ashore, Rule 40 (wearing personal flotation devices) applies at all times while afloat.

5. Schedule of Races

5.1 The Schedule of Races is shown in Attachment 1.

5.2 For back to back races, the scheduled time of the warning signal for the next race may be announced via VHF channel 17.

6. Handicaps

6.1 Boats entering the series will be allocated a time correction factor for its first three races, taking into account the likely performance of the boat relative to others in its division (handicap).

6.2 After completing three races, each boat's handicap will be adjusted according to its performance after it has completed a race.

7. Divisions and Flags

7.1 The series will be sailed in two divisions: Fully crewed and two handed. The following division flags will be used.

<i>Division</i>	<i>Class flag</i>	<i>Description</i>
Full Crewed Relling Cup	R	Yellow cross, red background
Two Handed Mark Ellmers	T	Red, white and blue vertical stripes

8. The Racing Area

8.1 On the waters adjacent to Plimmerton Boating Club and east of Mana Island.

9. The Courses

9.1 The course number for each class will be displayed on the official notice board not later than 85 minutes before the warning signal for that class.

9.2 Before the warning signal a change to the course to be sailed may be signalled to the fleet at the start box by displaying flag "L" over the number flag of the course to be sailed. Attention to the change will be made via VHF radio on channel 17.

9.3 The Course Sheet (Attachment 2) shows the course number, the order and the side on which each mark is to be passed.

10. Marks

10.1 The course marks will be orange cylindrical or pyramid shaped buoys.

10.2 The outer starting and finishing mark will be an orange spherical buoy.

11. The Start

11.1 The starting line will be between the black and yellow striped board on the start tower and the starting mark. If the black and yellow striped board is not displayed then the starting line will be between the main flagpole on the start tower and the starting mark.

11.2 Five lights may be lit from the start tower at the warning signal with one lamp extinguished every minute, the final lamp extinguished on the start. Times shall be taken from the flag signals. The incorrect timing or absence of a light signal shall not be grounds for redress.

11.3 If an individual recall is signalled, the name or sail number of the offending boat may be announced on VHF channel 17.

11.4 A boat starting later than 20 minutes after her starting signal will be scored DNS. This changes Rule A4.1. Any boat starting late must not interfere with boats starting in a later division.

11.5 Boats whose warning signal has not been made shall keep clear of the starting area [DP].

11.6 Any race in which fewer than three boats start or sign-on at the briefing will be deemed to be abandoned [DP].

Mark Foy starts:

11.7 Start times will be emailed to Skippers who have entered the series and posted on the official notice board, no later than the Friday prior to race day.

11.8 The starting sequence for the first boat will be per Rule 26. For subsequent boat starts, a sound signal will be made at each successive start, followed immediately by a VHF call announcing the start time. Rules 29 and 30 (recalls) shall not apply. However, a yacht taking advantage of this dispensation from recall may have its finishing time and placing adjusted by the Race Committee at its discretion pro-rata to the assumed advantage. This changes Rule 26.

12. Shortening the Course

12.1 A shortened course may be signalled by the Committee Boat displaying Flag S with 2 sounds at a rounding mark, and by an announcement on VHF channel 17 that will specify from which mark the race is shortened. Boats on rounding this mark shall proceed directly to and cross the finishing line provided they have rounded the same number of marks (in the correct sequence) as the leading boat of their division. This changes Rule 32.2.

13. The Finish

The finishing line will be between the black and yellow striped board on the start tower and the outer finishing mark. If the black and yellow striped board is not displayed then the finish line will be between the main flagpole on the start tower and the outer finishing mark.

14. Penalty System

Rule 44.1 "taking a penalty" is changed so that the 2-turns penalty is replaced by a 1-turn penalty.

15. Time Limits

15.1 The target times and time limits for the first boat to sail the course and finish are as follows.

Race Type	Target Time	Time Limit
Short	60 minutes	90 minutes
Long	120 minutes	180 minutes

15.2 For short races, all boats that finish more than 45 minutes after the 1st boat in their division will be scored DNF. For long races, all boats that finish more than 90 minutes after the 1st boat in their division will be scored DNF.

16. Protests

16.1 Protest forms are available in Attachment 3 and at the office at Mana Cruising Club. Protests and requests for redress shall be delivered to the Race Officer or a member of the Sailing Committee within the protest time limit.

16.2 The protest time limit is 90 minutes after the last boat, regardless of its division, has finished the last race of the day. The same time limit applies to all divisions. This changes Rules 61.3 and 62.2.

16.3 Notices will be posted within 30 minutes of the protest time limit to inform competitors of the place and times of hearings in which they are parties or named as witnesses.

16.4 The Protest Committee may apply an alternative penalty to that of disqualification as provided for in Rule 64.1(a)

17. Scoring

17.1 A boat's position in a race and the series will be determined using Appendix A including the Low Point System except as changed below.

17.2 Four races are required to constitute a series.

17.3 When fewer than six races have been completed, a boats series score will be the total of her race scores.

17.4 When from six to eight races have been completed, a boats series score will be the total of her race scores excluding her worst score.

17.5 When nine or more races have been completed, a boats series score will be the total of her race scores excluding her two worst scores.

17.6 On the completion of the series, boats that have completed less than 60% of the races will be excluded from the final series scoring. This changes Appendix A.

18. Radio Communications

18.1 Except in an emergency, a boat that is racing shall not make voice or data transmissions and shall not receive voice or data communication that is not available to all boats. This restriction also applies to mobile telephones. [DP]

18.2 The call sign for the Start Tower is “**PLIMMERTON SPORTS RADIO**”. On VHF Channel 17.

19. Entry Requirements and Prizes

19.1 There will be no entry fee.

19.2 Yachts may enter at any time during the series by completing the form in Attachment 4 and providing it to the Race Committee.

19.3 A prize will be awarded for each race for first on handicap for each fleet.

19.4 No Trophies are to leave the Club Rooms.

19.5 For skippers, owners and crew members who wish to be eligible for spot prizes which will be drawn each race day a spot prize fee of \$25.00 shall be paid to the Race Committee.

19.6 Skippers and crew members must be a member of a yacht club affiliated with Yachting New Zealand.

20. Advertising

20.1 Boats will be required to display advertising chosen and supplied by the Organising Authority

21. Disclaimer of Liability

21.1 Competitors participate in the Titahi Bay Boating Club Racing entirely at their own risk.

21.2 Refer Rule 4, Decision to Race. The Organising Authority, Race Committee, individuals appointed and volunteers will not accept any liability for material damage or personal injury or death sustained in conjunction with or prior to, during or after club racing or a race series or at any other time, nor are they responsible for the seaworthiness of any boat whose entry is accepted, or the sufficiency, or adequacy of its equipment.

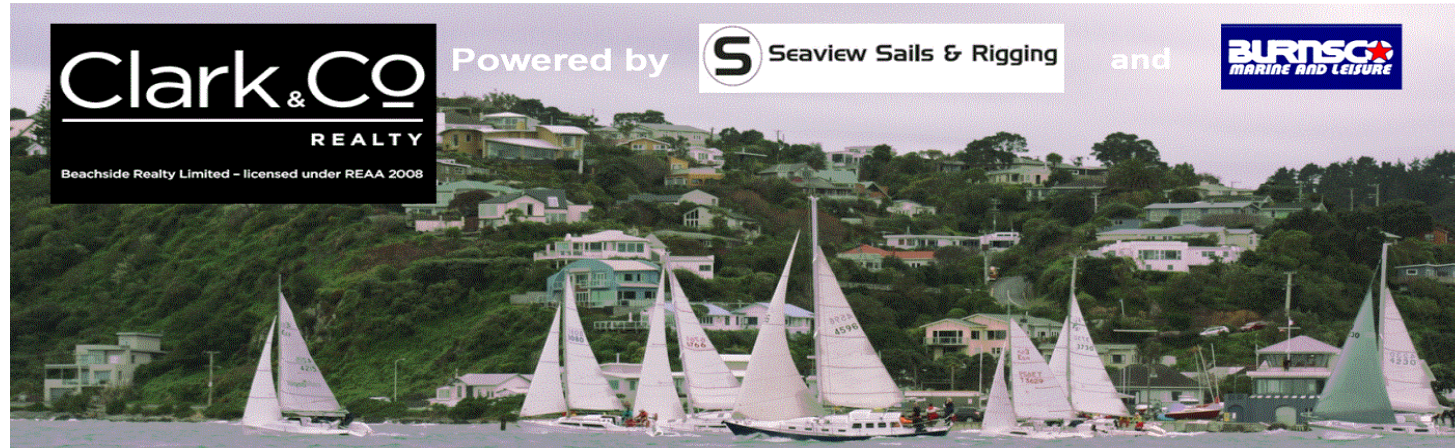
22. Statement of Weather Policy

22.1 Races shall be postponed if, in the opinion of the Race Officer, the local wind speed is expected to consistently exceed 30 knots during a race, or if weather and/or sea conditions are likely to pose a risk to competitors. Decisions as to whether those conditions will be met will be at the judgement of the Race Officer whose decision shall be final.

23. Insurance

23.1 Each participating boat shall be insured with valid third-party liability insurance.

Attachment 1 Schedule of Races



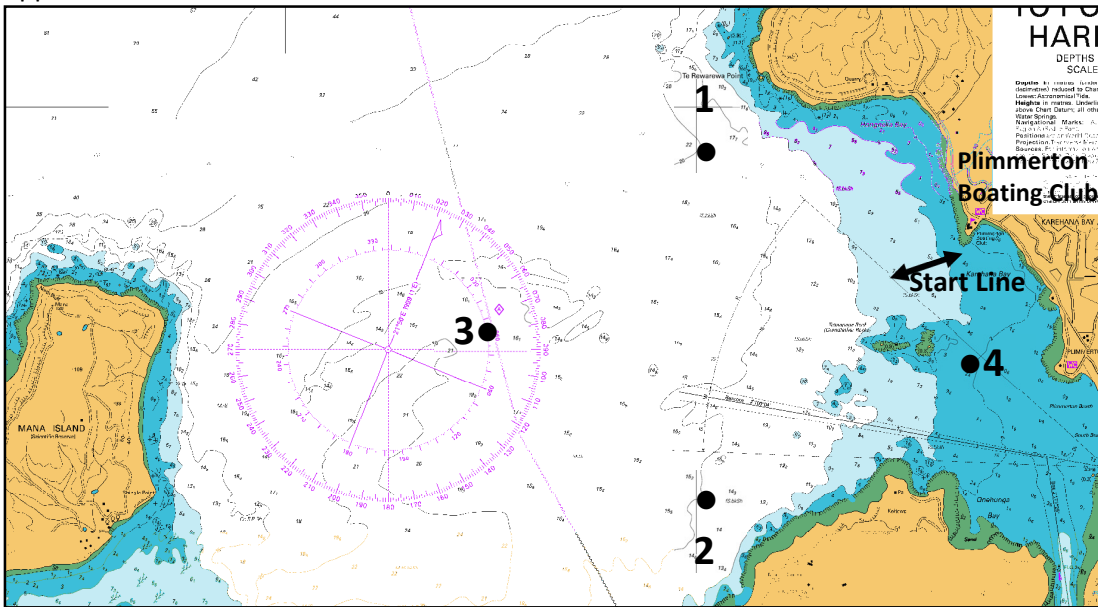
2018 Winter Series Race Schedule

Date	Race Schedule	High Water Time	Tide Height	Briefing	Race Start
6/05/2018	1 long race	13:25	1.5	11:00	12:30
20/05/2018	2 short races	13:21	1.6	10:30	12:00
17/06/2018	1 long race	12:27	1.6	10:00	11:30
1/07/2018	2 short races	10:58	0.6	9:00	10:30
15/07/2018	1 long race	11:32	0.6	9:00	10:30
29/07/2018	2 short races	11:02	0.6	8:00	9:30
19/08/2018	1 long race	14:49	1.4	12:15	13:45
2/09/2018	1 long race	13:52	1.5	11:15	12:45
16/09/2018	1 Mark Foy / Reserve	13:34	1.6	11:00	12:30
23/09/2018	Prizegiving				

High water times are measured at Mana 41.06S 174.52E

Attachment 2 Course Sheet

Approximate location of Marks



Normal Position for marks:

- Mark 1 Te Rewarewa Point
- Mark 2 Titahi Bay
- Mark 3 Mana Island
- Mark 4 eastern side of Reef

VHF Radio
Plimmerton Sports
Radio Channel 17

Courses for Northerly/Westerly Winds

All marks taken to PORT

- Course 1 Start – 1 – 2 – 1 – 3 – 2 – 1 – 3 – 2 – 4 – Finish
- Course 2 Start – 1 – 2 – 1 – 3 – 2 – 1 – 2 – 1 – 2 – 4 – Finish
- Course 3 Start – 1 – 2 – 1 – 3 – 2 – 1 – 2 – 1 – 3 – 2 – 4 – Finish
- Course 4 Start – 1 – 2 – 1 – 2 – 1 – 2 – 1 – 2 – 4 – Finish

**Mark 1 last time taken to starboard*

Courses for Southerly Winds

All marks taken to STARBOARD

- Course 5 Start – 4 – 2 – 1 – 2 – 3 – 1 – 2 – 3 – 1 – Finish
- Course 6 Start – 4 – 2 – 1 – 2 – 3 – 1 – 2 – 1 – 2 – 1 – Finish
- Course 7 Start – 4 – 2 – 1 – 2 – 3 – 1 – 2 – 1 – 2 – 1 – 2 – 3 – 1 – Finish
- Course 8 Start – 4 – 2 – 1 – 2 – 1 – Finish

THIS SECTION FOR PROTEST COMMITTEE USE

Number Heard together with numbers

Fill in and tick as appropriate

Withdrawal requested ; signed

Withdrawal permitted Protest time limit

Protest, or request for redress or reopening, is within time limit

Time limit extended

Protestor, or party requesting redress or reopening, represented by

Other party or boat being considered for redress, represented by

Names of witnesses

Interpreters

Remarks

Objection about interested party

Written protest or request identifies incident

'Protest' hailed at first reasonable opportunity

No hail needed, protestee informed at first reasonable opportunity

Red flag conspicuously displayed at first reasonable opportunity

Red flag seen by race committee at finish

Protest or request valid, hearing will continue

Protest or request invalid, hearing is closed

FACTS FOUND

.....

.....

.....

.....

.....

Diagram of boat is endorsed by committee Committee's diagram is attached

CONCLUSIONS AND RULES THAT APPLY

.....

.....

DECISION

Protest is dismissed Boat(s) is (are) disqualified

penalised as follows

Redress is not given given as follows

Request to reopen a hearing is denied ; granted

Protest committee chairman and other members

.....

.....

Chairman's signature

Date and time

Attachment 4 Entry Form

**Clark&Co Powered by Seaview Sails and Rigging and Burnsco
Marine.**

WINTER SERIES ENTRY FORM 2018

Organising Authority: Titahi Bay Boating Club

DIVISION (Tick one) **RELLING CUP** (Fully crewed)
 MARK ELLMERS TROPHY (two-handed)

BOAT NAME:

SAIL NO:

VHF CALL SIGN:

YACHT CLUB:

SKIPPER'S NAME:

ADDRESS:

PHONE NO(S):

EMAIL:

SPOT PRIZE ENTRY:

NAME	\$25 PAID	NAME	\$25 PAID

I agree to be bound by the Racing Rules of Sailing and all other rules that govern this event. I understand that yacht racing has inherent risks and dangers that are beyond the control of the organizing authority. I understand that neither the organising authority and its officers, members and servants nor other persons assisting with the conduct of the regatta accept any responsibility in respect of any injury or loss to person or property that may be sustained by reason of participation in the regatta or howsoever arising in connection with the regatta.

I agree to the use of my photograph(s) and other relevant information in any event publicity and in the ongoing promotion of New Zealand yachting. I agree to the Organising Authority and Yachting New Zealand holding the above information for the general administration and well-being of the sport, and for them to retain, use and disclose the information to affiliated organisations and any other persons or organisations that Yachting New Zealand believes will further the interests and objectives of Yachting New Zealand. I acknowledge my right to access to and correction of this information. The consent is given in accordance with the Privacy Act 1993.

Skipper's Signature

Date:

